

Lighting Proposal Memo

Executive Summary:

I have decided to explore other lighting options for 6 spaces of this building. I have chosen these spaces either because of their overall importance to the function of the building, or the level of importance Franklin & Marshall College has placed on a particular space. There are two spaces that are critical to allowing the building to function as a learning and gathering space: the lab spaces and the atrium. When advertising this building on their website, Franklin & Marshall always shows a picture of the front façade, which implies that this is the side of the building the college is most proud of and wants to showcase. This makes it a great candidate for further analysis. Three other spaces are mentioned frequently as being key features of the space: the Lecture Room, the Humanities Common Room, and the Humanities Garden. The goal for this thesis will be to enhance the aesthetic quality of these spaces, while still having a balance of low energy consumption and good space functionality.



Proposed Spaces:

Large Work Space: Typical Lab Space

Space Name: Intro Bio / Ecology Teaching Lab

Space Number: 208

Maximum Dimensions: 29'2" x 40'4" x 9'4"
Width Length Height

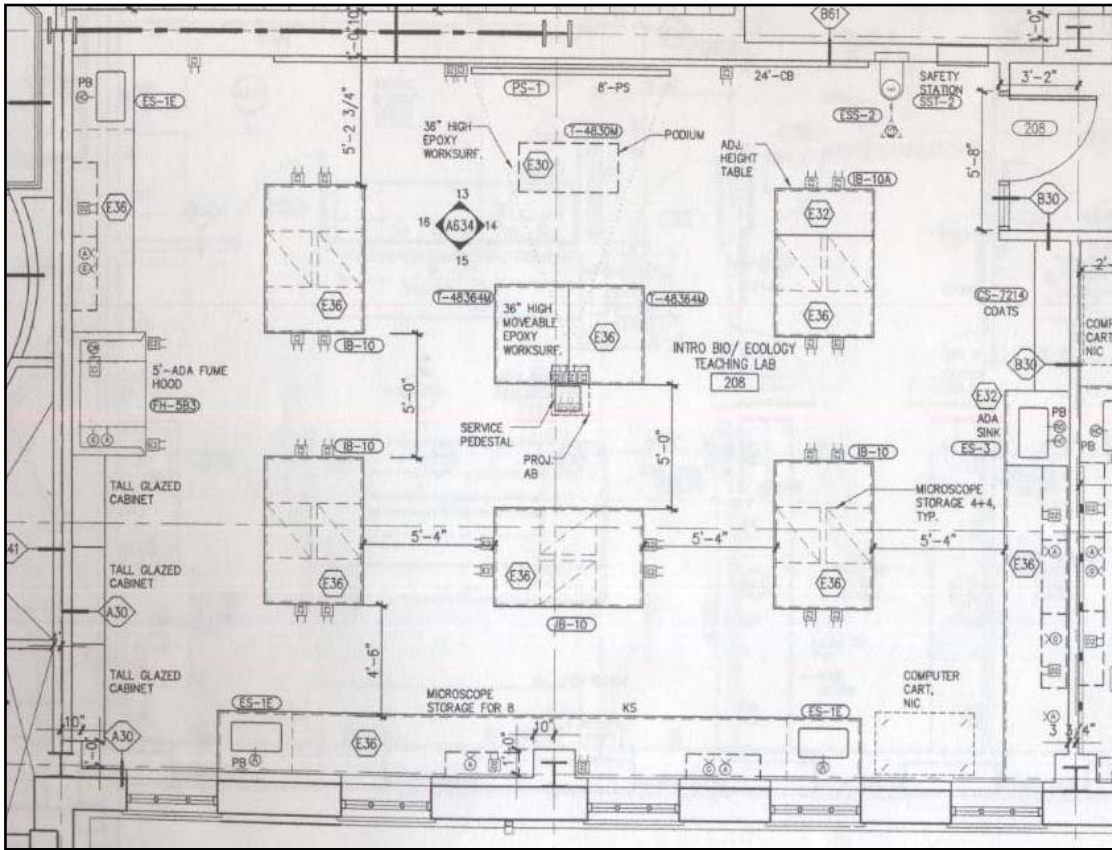
General Shape: Rectangular

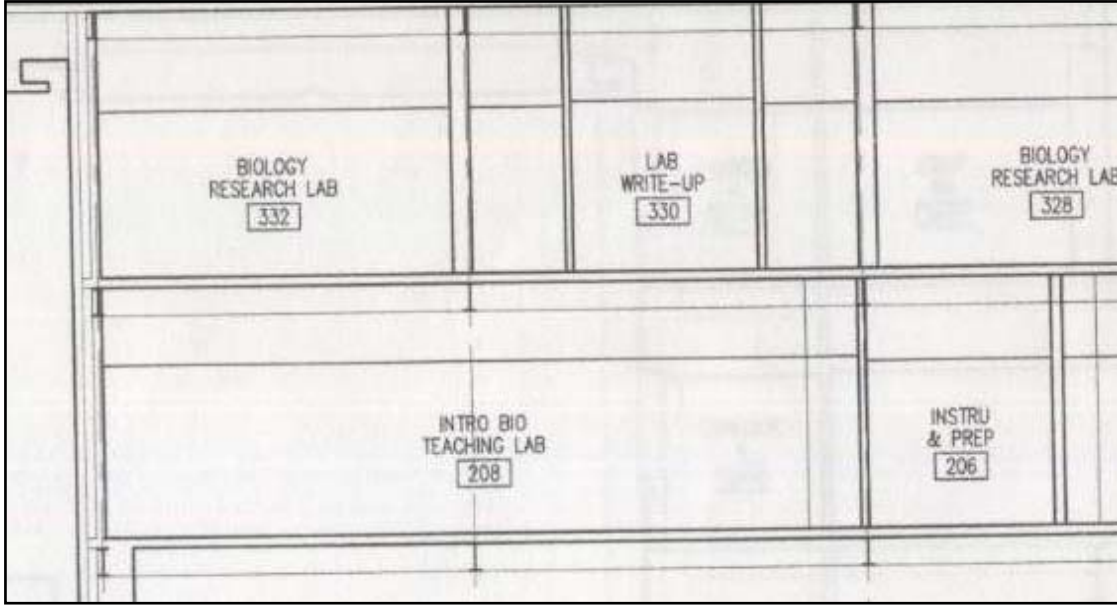
Materials: Ceiling – Acoustical Ceiling Tile
Walls – Gypsum Board
Floor – Vinyl Composite Tile

Const. Document Ref.: A122B
A210

Main Activities: There is a good amount of lab space on the second and third floors of the building, and this seems to be a good representation of those other spaces. The main tasks in this room would be experimentation and teaching/learning. Writing down measurements, reading lab instructions, and overall group work are also important tasks here

From Construction Documents:





Photography:



Source: <http://www.flickr.com/photos/fandm/sets/72157601193761478>

Linked from Franklin & Marshall College's official website <http://www.fandm.edu>

Special Purpose Space 1: Lecture Hall

Space Name: Lecture Hall

Space Number: 149

Maximum Dimensions: 45'0" x 61'2" x 8'6"-13'6"
Width Length Height

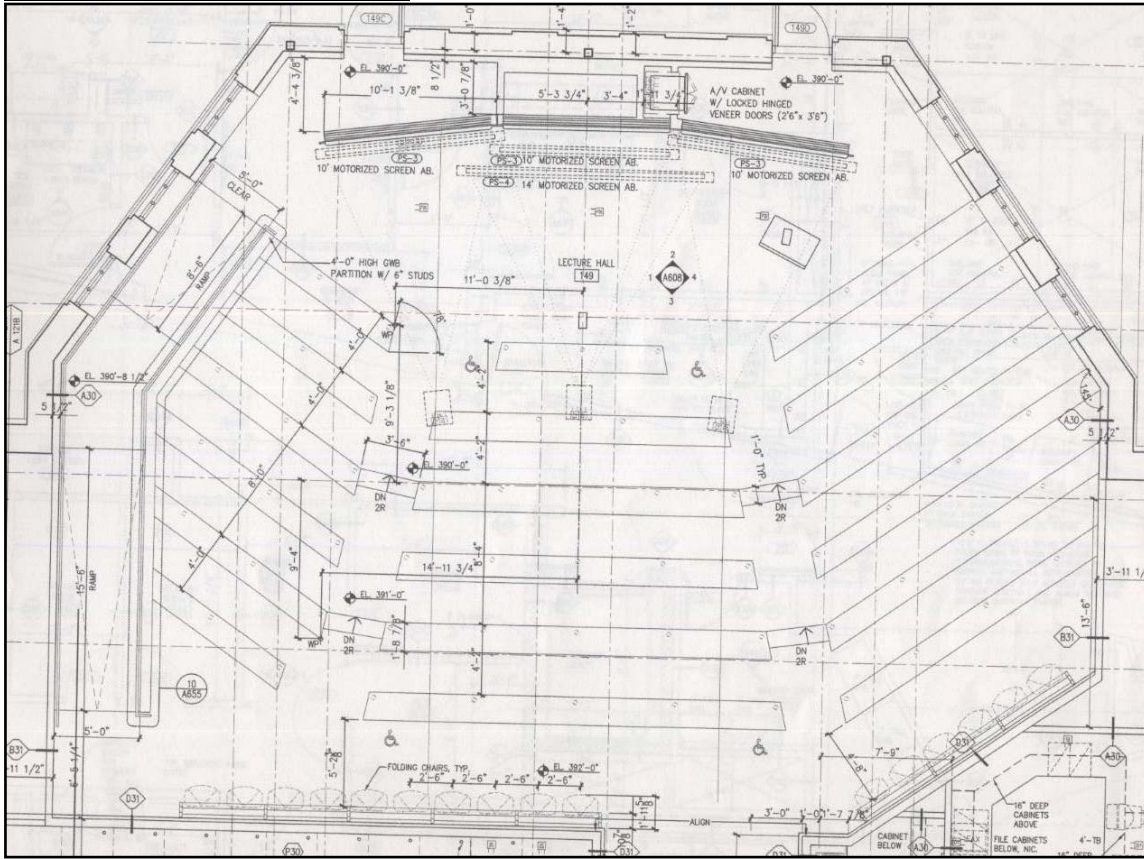
General Shape: Hexagonal/Sloped

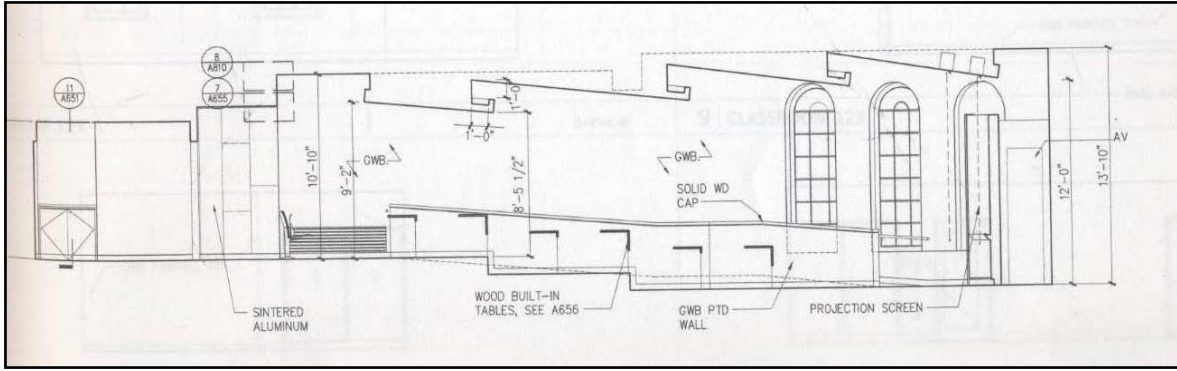
Materials: Ceiling – Acoustical Ceiling Tile
Gypsum Board
Walls – Gypsum Board
Floor – Carpet

Const. Document Ref.: A121C
A608

Main Activities: Franklin & Marshall College intends this room to act as a showcase room for the campus. They want to attract guest lecturers and seminars to the campus, and for them to be presented here. Other potential uses include class lectures (though the university would like to avoid this) and professional presentations.

From Construction Documents:





Photography:



Source: <http://www.flickr.com/photos/fandm/sets/72157601193761478>

Linked from Franklin & Marshall College's official website <http://www.fandm.edu>

Jason Weaver
10/5/2007

Barshinger LS&P Building
Lancaster, PA

Lighting/Electrical
Mistrick

Circulation Space: Atrium

Space Name: Atrium

Space Number: 100

Maximum Dimensions: 42'0" x 66'6" x 40'4"
Width Length Height

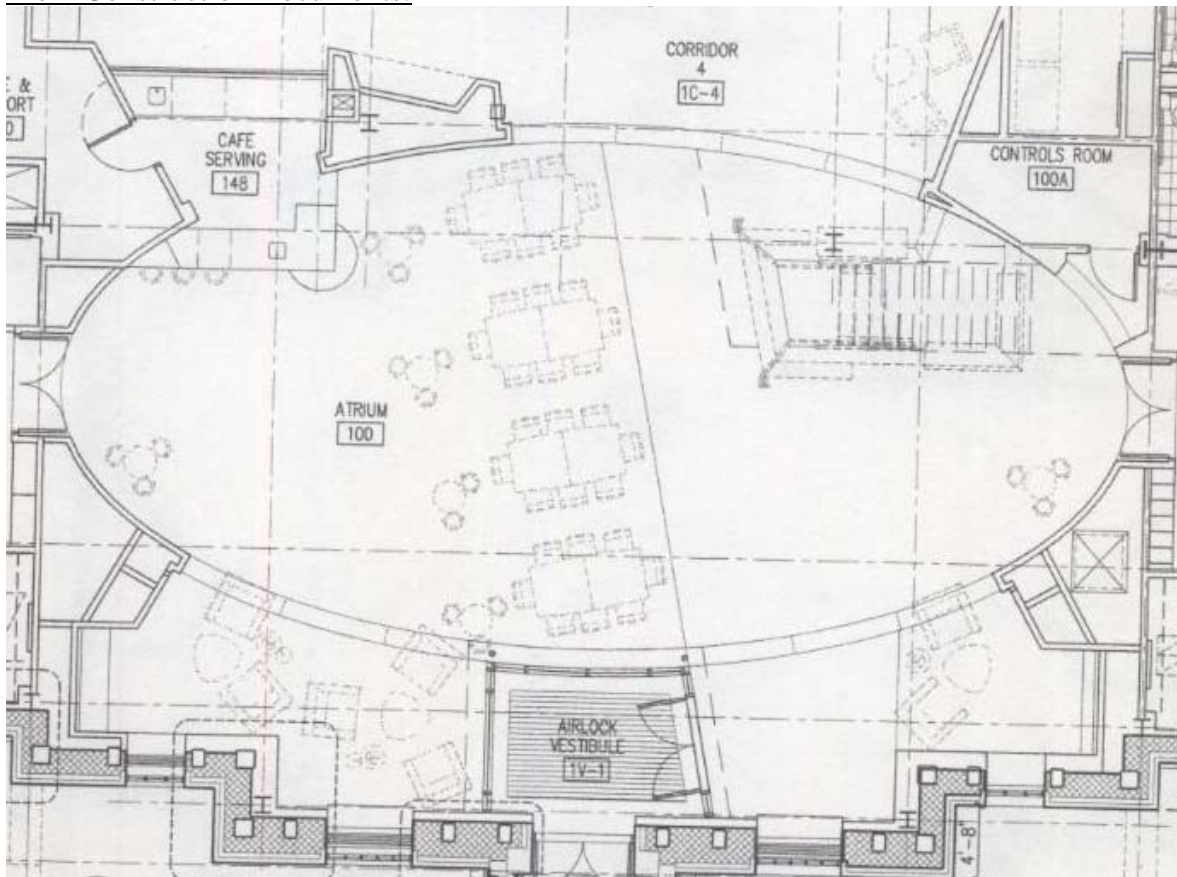
General Shape: Oval

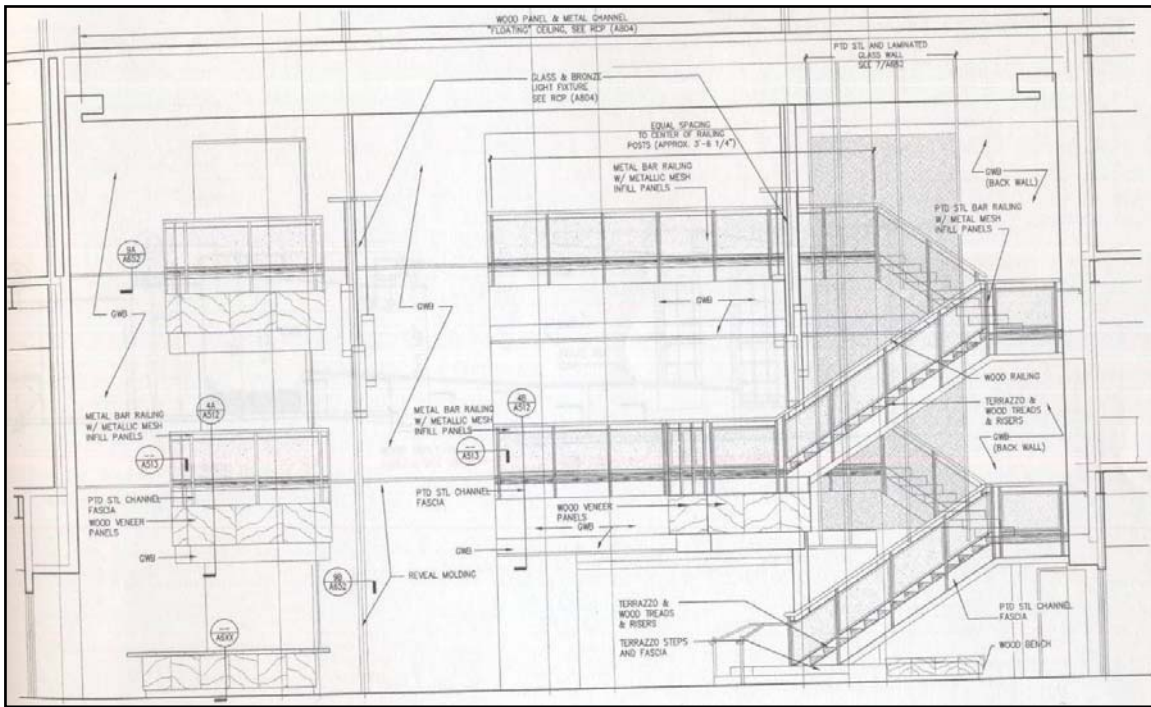
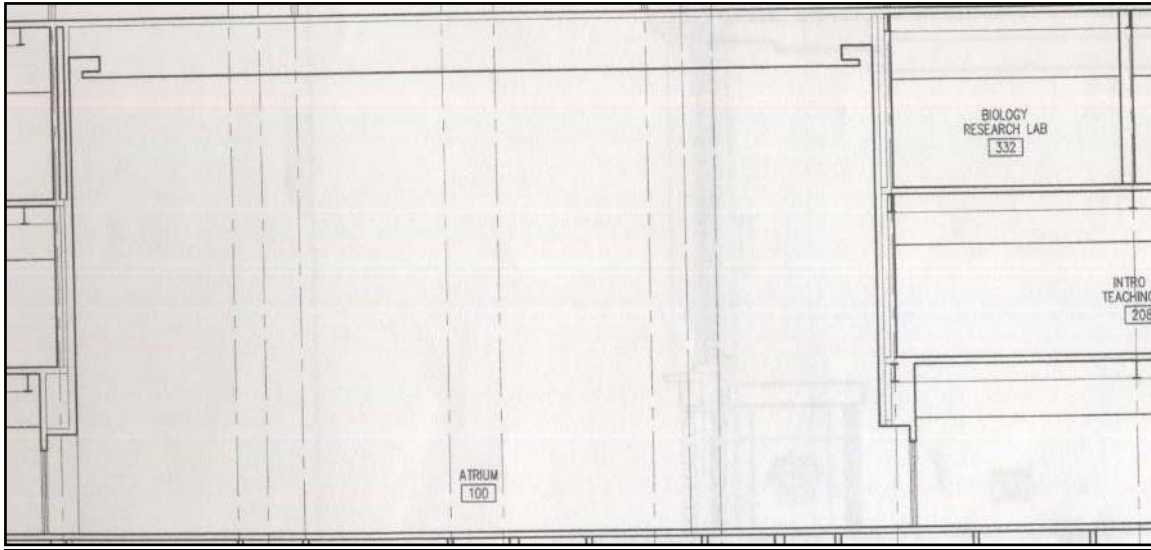
Materials: Ceiling – Wood
Gypsum Board
Walls – Gypsum Board
Floor – Carpet
Tile

Const. Document Ref.: A101
A210
A211
A607

Main Activities: This three-story atrium is the backbone of the building, and nearly every person who enters this building must go through the atrium. General egress is a major task. This will also be an informal meeting place (complete with café), so other critical tasks include speaking, reading, writing, group work, and eating,

From Construction Documents:

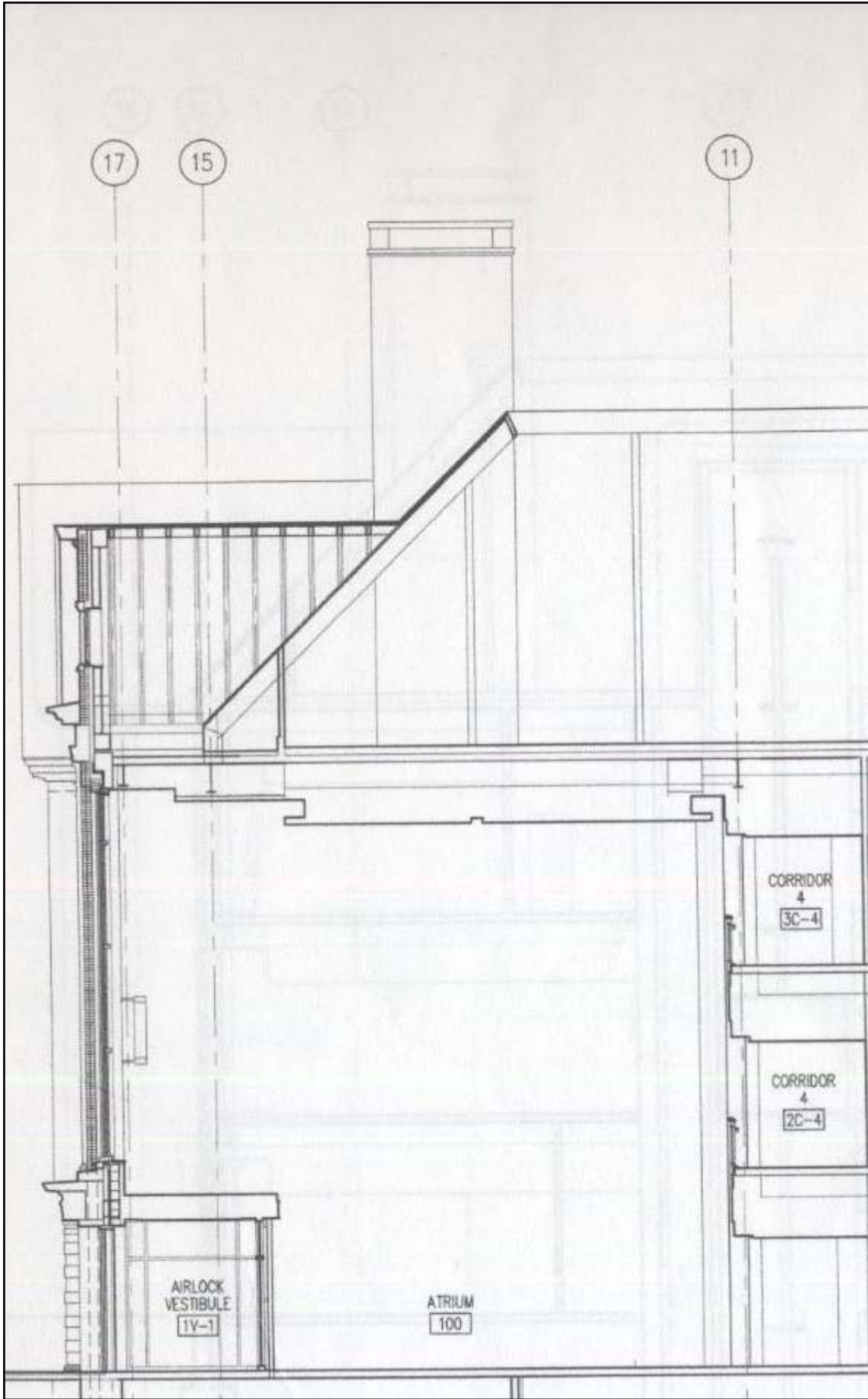




Jason Weaver
10/5/2007

Barshinger LS&P Building
Lancaster, PA

Lighting/Electrical
Mistrick



Jason Weaver
10/5/2007

Barshinger LS&P Building
Lancaster, PA

Lighting/Electrical
Mistrick

Photography:



Source: <http://www.flickr.com/photos/fandm/sets/72157601193761478>
Linked from Franklin & Marshall College's official website <http://www.fandm.edu>

Jason Weaver
10/5/2007

Barshinger LS&P Building
Lancaster, PA

Lighting/Electrical
Mistrick



Source: <http://www.flickr.com/photos/fandm/sets/72157601193761478>

Linked from Franklin & Marshall College's official website <http://www.fandm.edu>



Source: <http://www.flickr.com/photos/fandm/sets/72157601193761478>
Linked from Franklin & Marshall College's official website <http://www.fandm.edu>

Jason Weaver
10/5/2007

Barshinger LS&P Building
Lancaster, PA

Lighting/Electrical
Mistrick

Outdoor Space 1: Front Facade

Space Name: East Façade

Space Number: N/A

Maximum Dimensions: 260'4" x 48'0"
Length *Height*

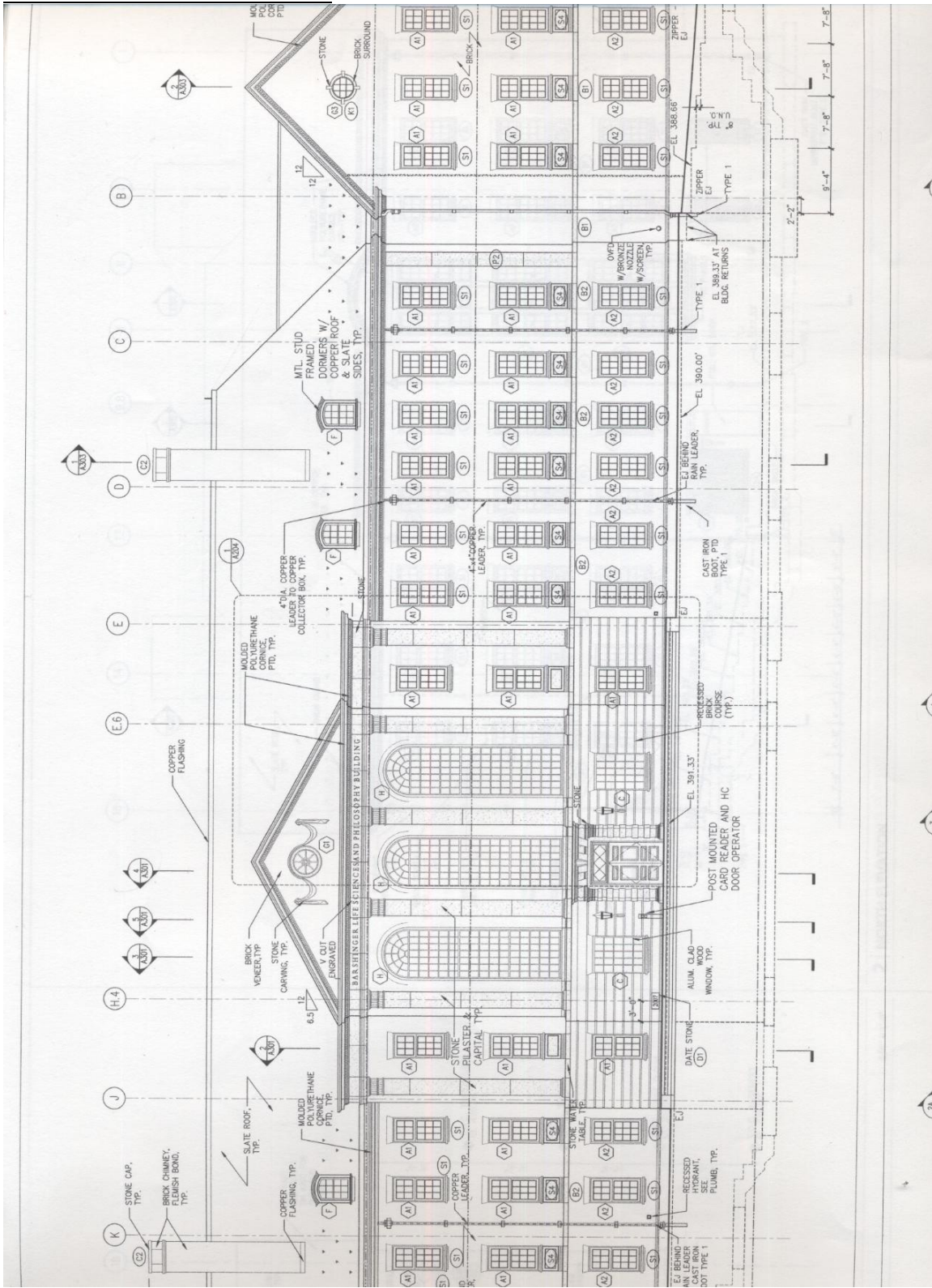
General Shape: Rectangular

Materials: Facade – Brick
Concrete

Const. Document Ref.: A201

Main Activities: I am including the adjacent sidewalk in my study of this area. The critical need of this space is nighttime security. Students are going to be using this sidewalk at night, so they need to be able to see enough to walk and to feel safe.

From Construction Documents:



Jason Weaver
10/5/2007

Barshinger LS&P Building
Lancaster, PA

Lighting/Electrical
Mistrick

Photography:



Source: <http://www.flickr.com/photos/fandm/sets/72157601193761478>

Linked from Franklin & Marshall College's official website <http://www.fandm.edu>

Jason Weaver
10/5/2007

Barshinger LS&P Building
Lancaster, PA

Lighting/Electrical
Mistrick

Special Purpose Space 2: Humanities Commons

Space Name: Humanities Common Room

Space Number: 191

Maximum Dimensions: 22'0" x 59'4" x 11'10"
Width Length Height

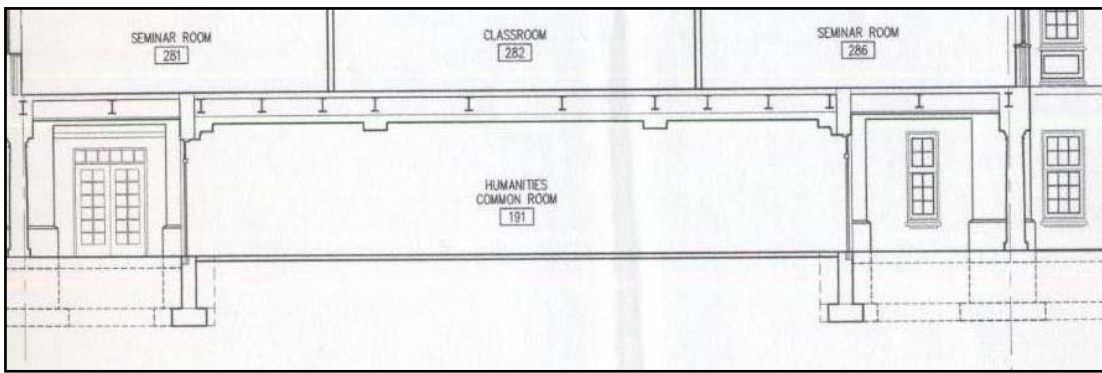
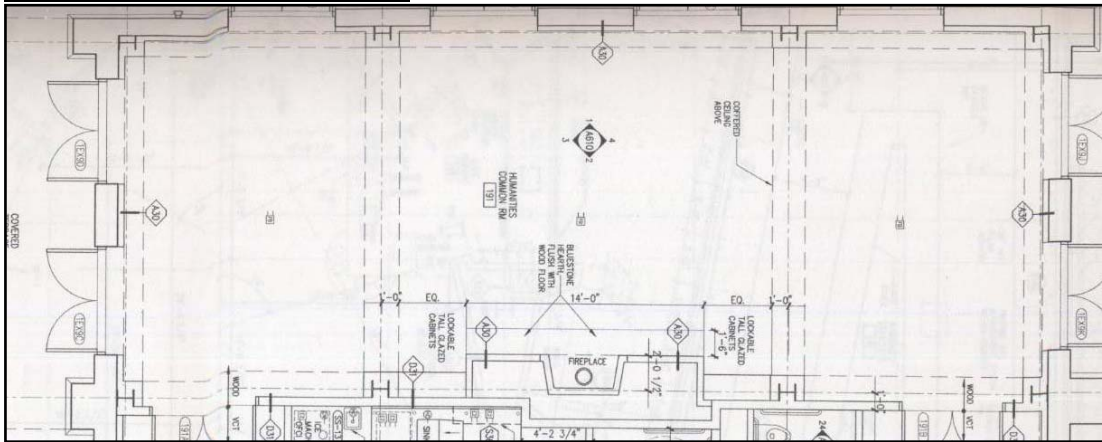
General Shape: Rectangular

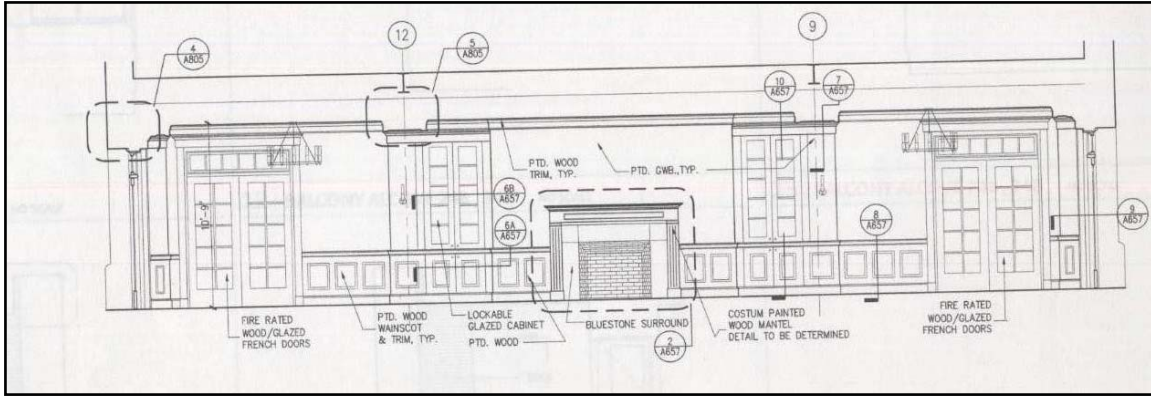
Materials: Ceiling – Plaster
Walls – Gypsum Board
Wood
Floor – Wood

Const. Document Ref.: A121A
A210
A211
A610

Main Activities: Franklin & Marshall College wanted this space to be for the students. It acts as a gathering space for students and student organizations. Small meetings will happen here, as will quiet study and reading.

From Construction Documents:





Photography:



Source: <http://www.flickr.com/photos/fandm/sets/72157601193761478>

Linked from Franklin & Marshall College's official website <http://www.fandm.edu>

Outdoor Space 2: Humanities Garden

Space Name: Humanities Garden

Space Number: N/A

Maximum Dimensions: 28'2" x 60'0"
Width Length

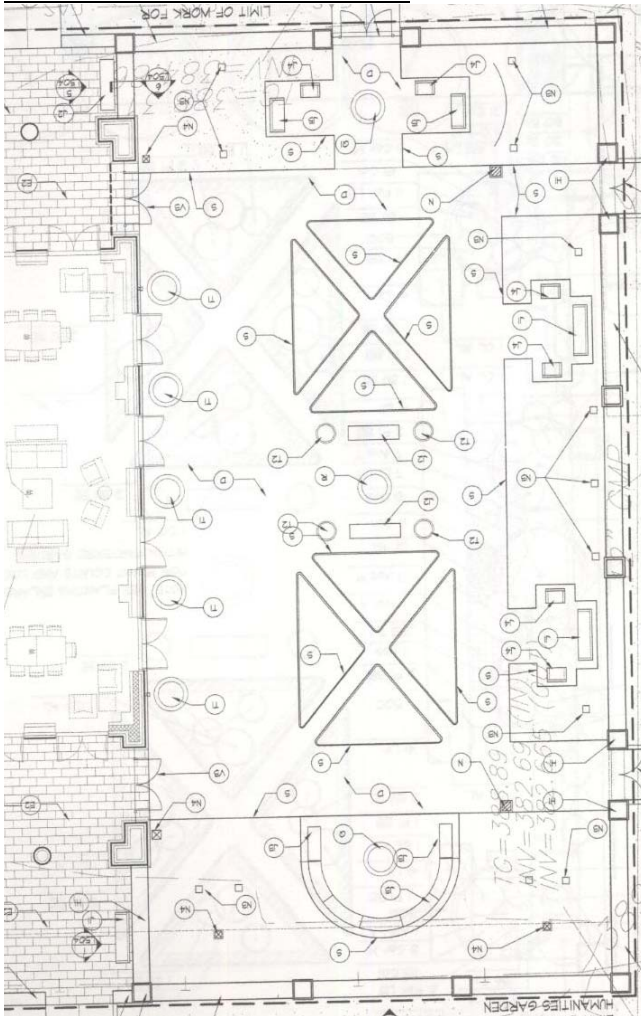
General Shape: Rectangular

Materials: General – Brick

Const. Document Ref.: L201

Main Activities: During the day, the space will be used by students as a place to relax, read, eat, or talk. Daylight should be more than sufficient for those tasks. At nighttime, fewer students will gather here, and security will be the biggest concern, as will general egress through the garden.

From Construction Documents:



Jason Weaver
10/5/2007

Barshinger LS&P Building
Lancaster, PA

Lighting/Electrical
Mistrick

Photography:



Source: <http://www.flickr.com/photos/fandm/sets/72157601193761478>

Linked from Franklin & Marshall College's official website <http://www.fandm.edu>